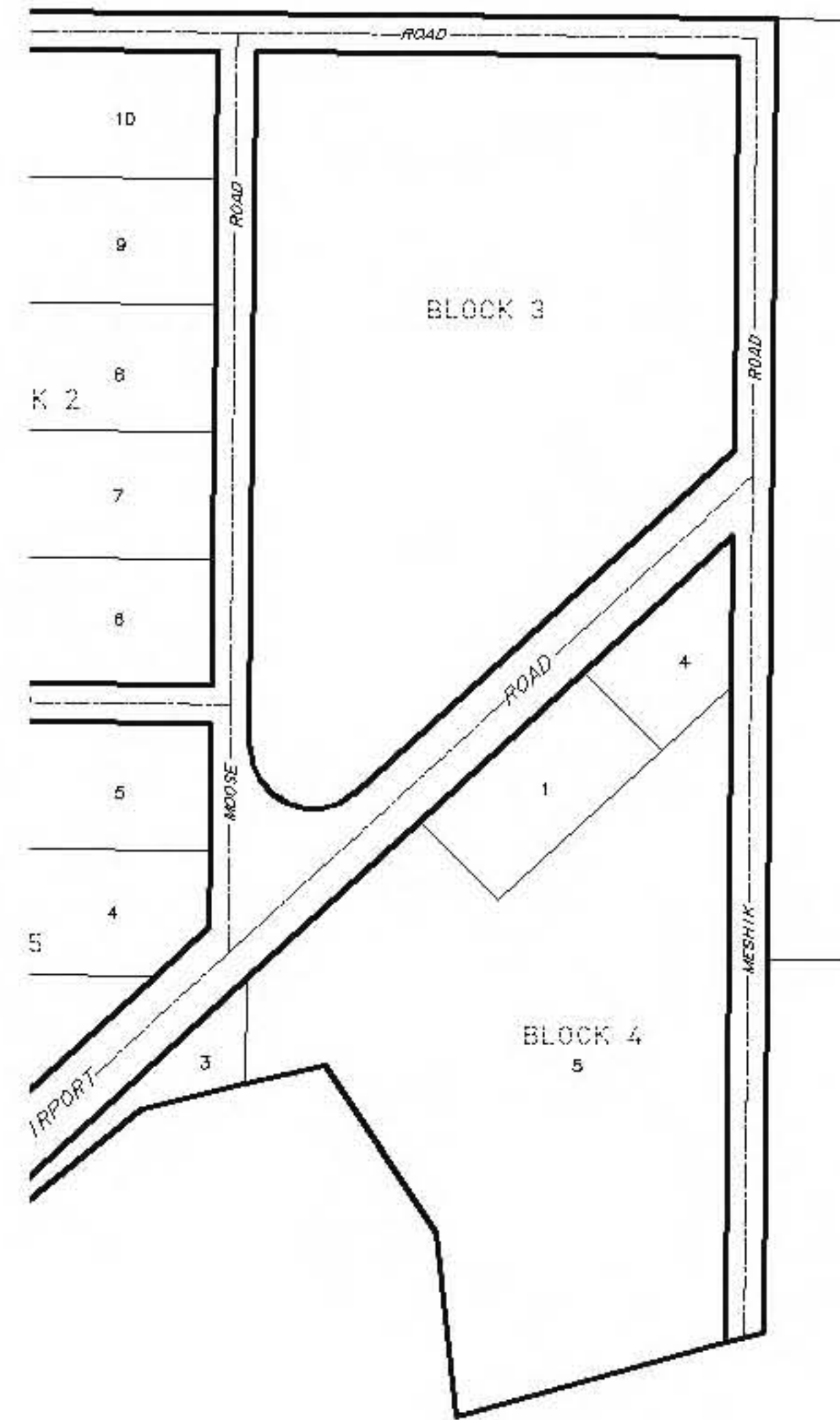


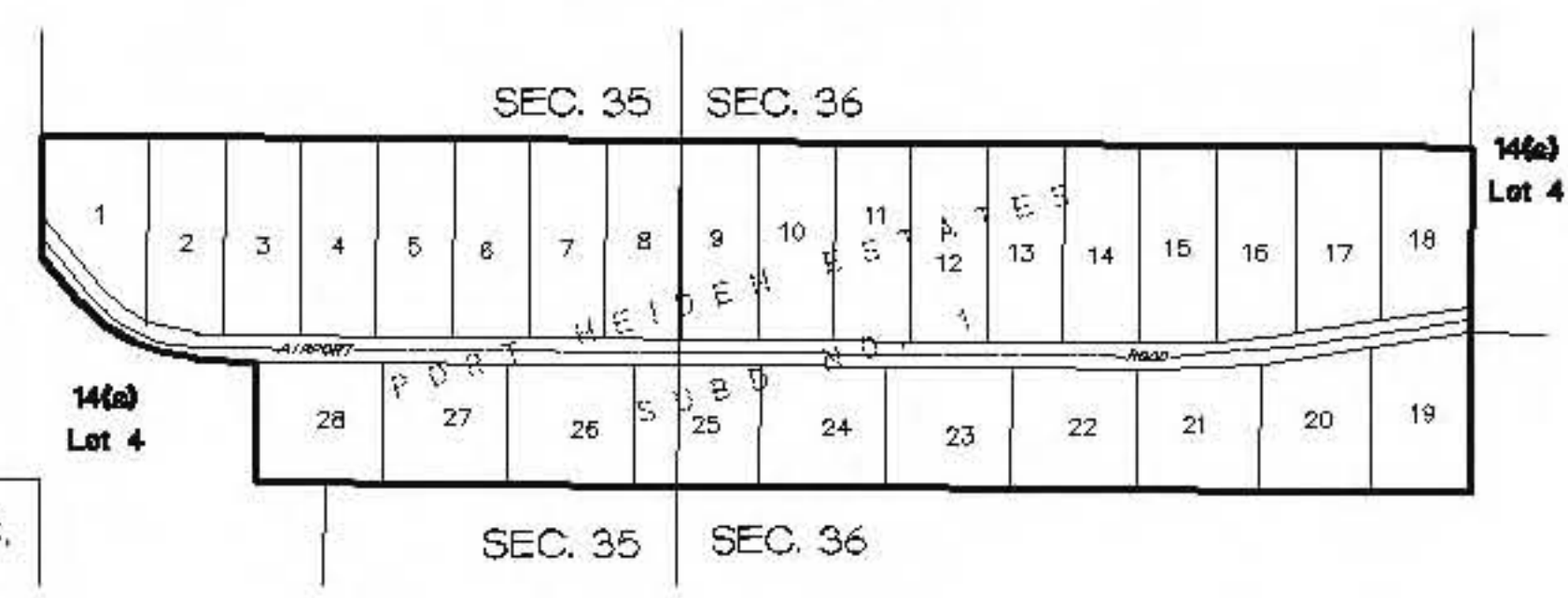
DETAIL A
SCALE 1" = 300'



LEGEND

- CITY LIMITS
- SELECTED LANDS BOUNDARY
- ANIAKCHAK NATIONAL MONUMENT AND PRESERVE BOUNDARY
- ALASKA PENINSULA NATIONAL WILDLIFE REFUGE BOUNDARY
- PORT HEIDEN STATE CRITICAL HABITAT AREA
- EXISTING TRAIL EASEMENT
- PROPOSED TRAIL EASEMENT
- CAMPSITE, TRAIL DESIGNATION
- PORT HEIDEN TOWNSITE SURVEY No.5578
- SUBDIVISION
- U.S. SURVEY
- A.P.C. 5 ACRE LEASE SITE

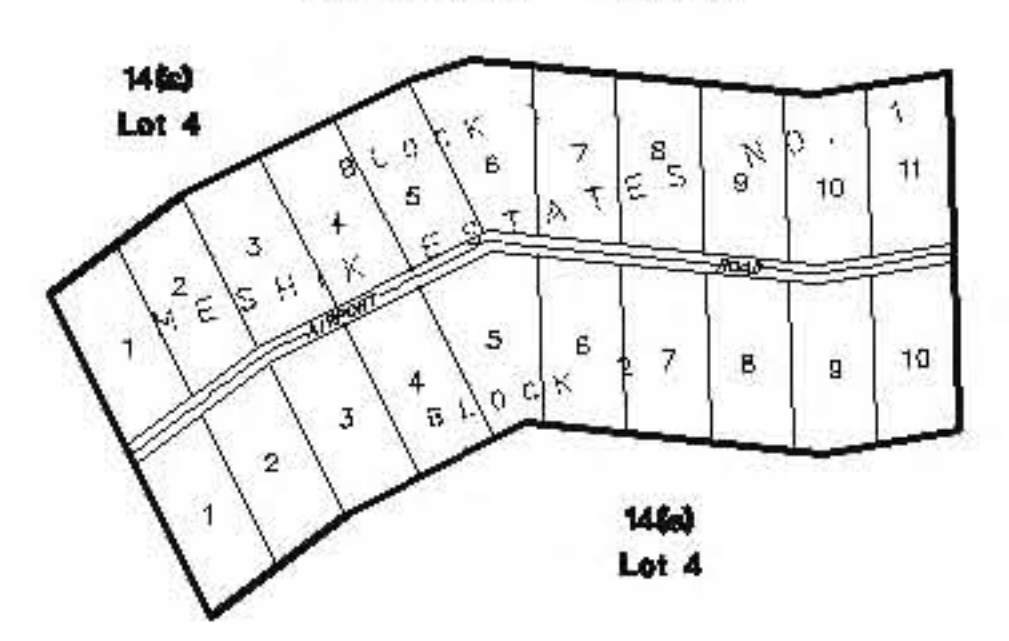
DETAIL B
SCALE 1" = 600'



GOLDFISH LAKE

BRISTOL BAY NATIVE CORPORATION RECORDED TITLE DOCUMENTS																
DATE	VILLAGE REGION	IC/PAT. NOS.	12(a) I.C. ACRES	12(b) I.C. ACRES	12(a) PAT. ACRES	12(b) PAT. ACRES	RECONVEYED ACREAGE		BRISTOL BAY NATIVE CORPORATION			VILLAGE CORPORATION				
							BBNC	VILLAGE	REC. DIST.	DATE REC.	BK. NO.	PAGE NOS.	DATE REC.	BK. NO.	PAGE NOS.	
25-APR-78	PORT HEIDEN	081/092	65,158.00							KVICHAK	12/07/79	11	881-895	12/02/83	14	583-570
NO DATE	PORT HEIDEN															
07-MAR-83	PORT HEIDEN									KVICHAK	12/28/87	19	747-760	12/02/83	14	571-573
28-DEC-87	PORT HEIDEN															
30-DEC-87	PORT HEIDEN															
27-OCT-89	PORT HEIDEN															
30-Sep-91	PORT HEIDEN	50-91-0621/0622			56,948.83					KVICHAK	10/15/91	23	606-610	10/15/91	23	598-605
10-Jun-01	PORT HEIDEN				360.00					KVICHAK	01/03/02	1-2				
15-Jun-07	PORT HEIDEN	50-2007-0526/0527			4,292.85					KVICHAK	07/33/07	1-3		07/03/07		1-5
28-Aug-07	PORT HEIDEN	50-2007-0671/0672			841.86					KVICHAK	09/11/07	1-3		09/11/07		1-3
29-Apr-08	PORT HEIDEN	2103/2104			7,037.00					KVICHAK	05/02/08	1-3		05/02/08		1-4
18-Jan-08	PORT HEIDEN	50-2008-0336/0337			7,036.39					KVICHAK	8/6/08	1-3		8/6/08		1-3
TOTAL ACREAGE			79,233.39		62,083.34			56.18								

DETAIL C
SCALE 1" = 600'



NOTES

THIS MAP DOES NOT REPRESENT A FIELD SURVEY. ANY CONSTRUCTION SHOULD INCLUDE ON-SITE INVESTIGATION AND SURVEY. THIS MAP HAS BEEN PREPARED USING VARIOUS SOURCES.

PRIMARY SOURCES INCLUDE THE BUREAU OF LAND MANAGEMENT, STATE OF ALASKA, DEPARTMENT OF NATURAL RESOURCES, RECORDED SURVEY PLATS AND DEEDS FROM THE BRISTOL BAY RECORDING DISTRICT. GLOBAL POSITIONING SERVICES, INC. HAS, TO THE BEST OF OUR PROFESSIONAL KNOWLEDGE AND BELIEF PRESENTED INFORMATION THAT IS COMPLETE AND ACCURATE BUT DOES NOT ASSUME RESPONSIBILITY FOR THE INFORMATION OBTAINED FROM THE REFERENCED SOURCES.

MAP COORDINATES ARE BASED UPON ALASKA STATE PLANE COORDINATE SYSTEM ZONE 6 (NAD 27). TOWNSHIP POSITIONS ARE PROTRACTED FROM THE SEWARD BASE AND MERIDIAN, ALASKA.

U.S. SURVEYS AND MESHIK (14C) SURVEYS WERE INPUT BY RECORD BEARINGS AND DISTANCES, AND OR DIGITIZED FROM BLM MASTER TITLE PLATS (MTP) AND U.S. SURVEY PLATS. PRIVATE SUBDIVISIONS WERE DIGITIZED FROM COPIES OF THE RECORDED SUBDIVISION PLATS. REFER TO RECORD SURVEY PLATS FOR OFFICIAL SURVEY INFORMATION.

TOPOGRAPHIC AND PLANIMETRIC FEATURES WERE OBTAINED FROM THE USGS WEBSITE. THE 7.5 MINUTE QUADRANGLES USED WERE: BRISTOL BAY (A-2), CHIGNIK (C-1, C-2, C-3, D-1, D-2 & D-3), ALASKA.

NO.	REVISION DESCRIPTIONS	BY	DATE
4	UPDATED LEGEND	SDS	1/17/11
3	UPDATED TITLE BLOCK, NOTES, REMOVED IC	TMM	12/07/10
2	UPDATED MAP, FINAL LAND SELECTIONS	JCG	12/11/08
1	UPDATED MAP, ADDED ADJOINING BOUNDARIES	SES	2/07/02

BASE MAP OF
ALASKA PENINSULA CORPORATION
(MESHIK INCORPORATED)

ALASKA NATIVE CLAIMS SETTLEMENT ACT
BBNC 14(h)(8) PRIORITIZED, AND 12(a) PATENTED LANDS
LOCATED IN BRISTOL BAY AT
PORT HEIDEN, ALASKA

GLOBAL POSITIONING SERVICES INC. Digital Surveying and Mapping Consultants 661° 11' 28" North 151° 3' 53" 27" West	SCALE: 1" = 5280'	SURVEY DATE N/A
2603 BLUEBERRY ROAD ANCHORAGE, ALASKA 99503 TEL 907.569.2000 FAX 907.569.2002	DRAWN: J.C.G.	CHECKED: S. SEARS
PREPARED FOR: ALASKA PENINSULA CORP. P.O. BOX 100220 ANCHORAGE, ALASKA 99510	DATE DRAWN 11/06/09	FIELD BOOK N/A
	FILED: 2/07/02	GRID: PT HEIDEN
		9162_PH